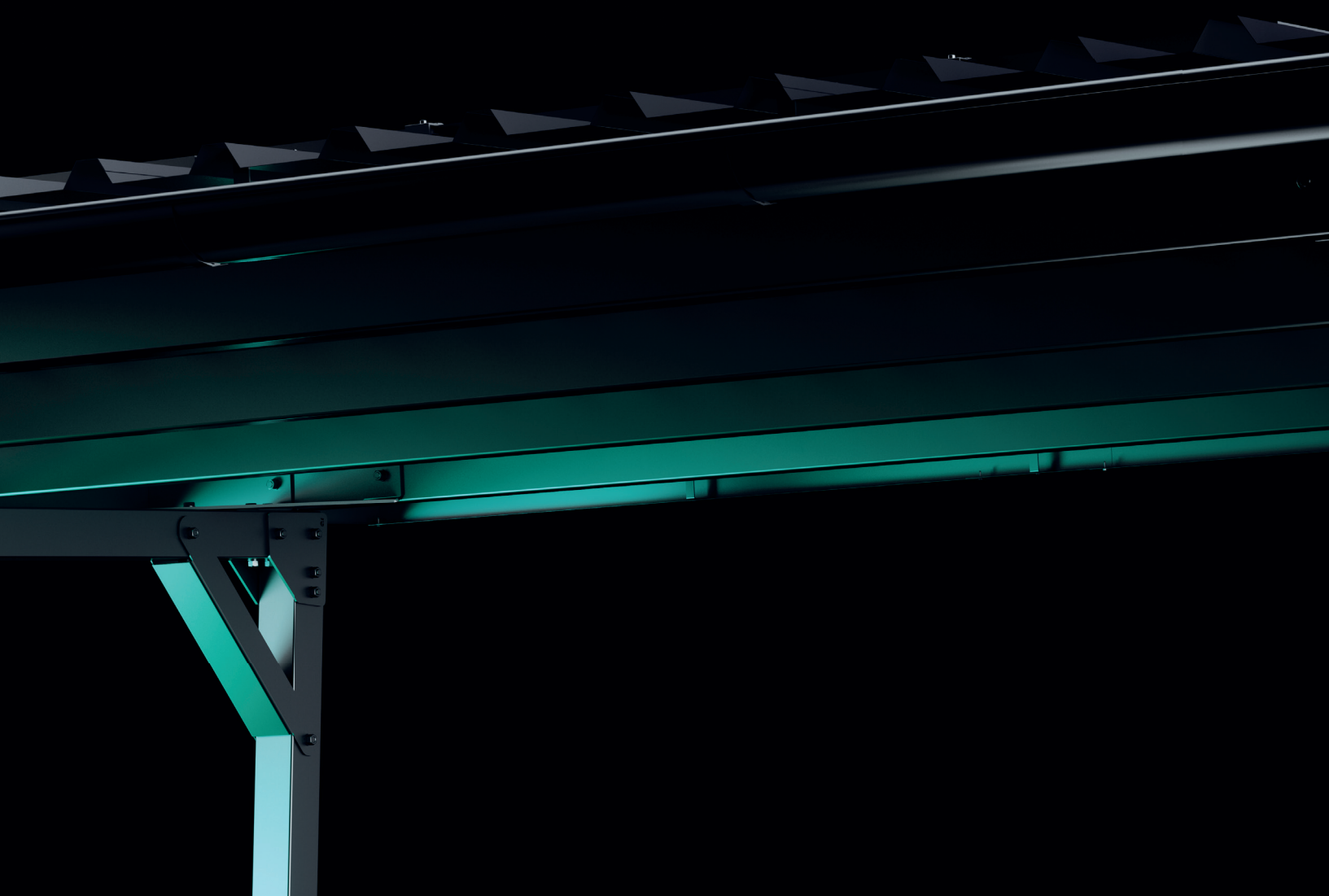




Solar Carports



E-Port Home
Single & Double



**Power the World
With Solar Carports.**

**This solution leaves
no room for doubt:
highest quality materials
combined with a simple
construction makes
the E-Port Home a
cost-effective and
efficient solution.**





The All-In-One Solution for Your Vehicle.

The E-Port Home offers immediate benefits and long-term security for stakeholders, be they customers, investors, developers and all those responsible for engineering, procurement and construction. A quick and easy planning guide for seamless design and a digitised installation manual for user-friendly learning are available.

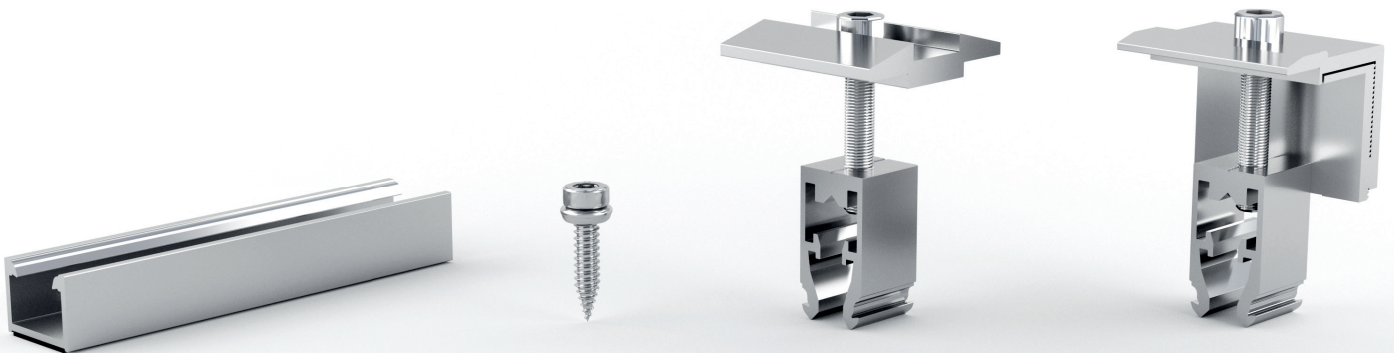
We have been manufacturing robust products at our headquarters in Rangsdorf, Germany since 1993. As a result of continuous investment, we have developed a range of future-proof PV mounting systems. The commitment to optimisation and attention to detail provides an exceptional and sustainable product with a 10-year warranty.

Reliable technology

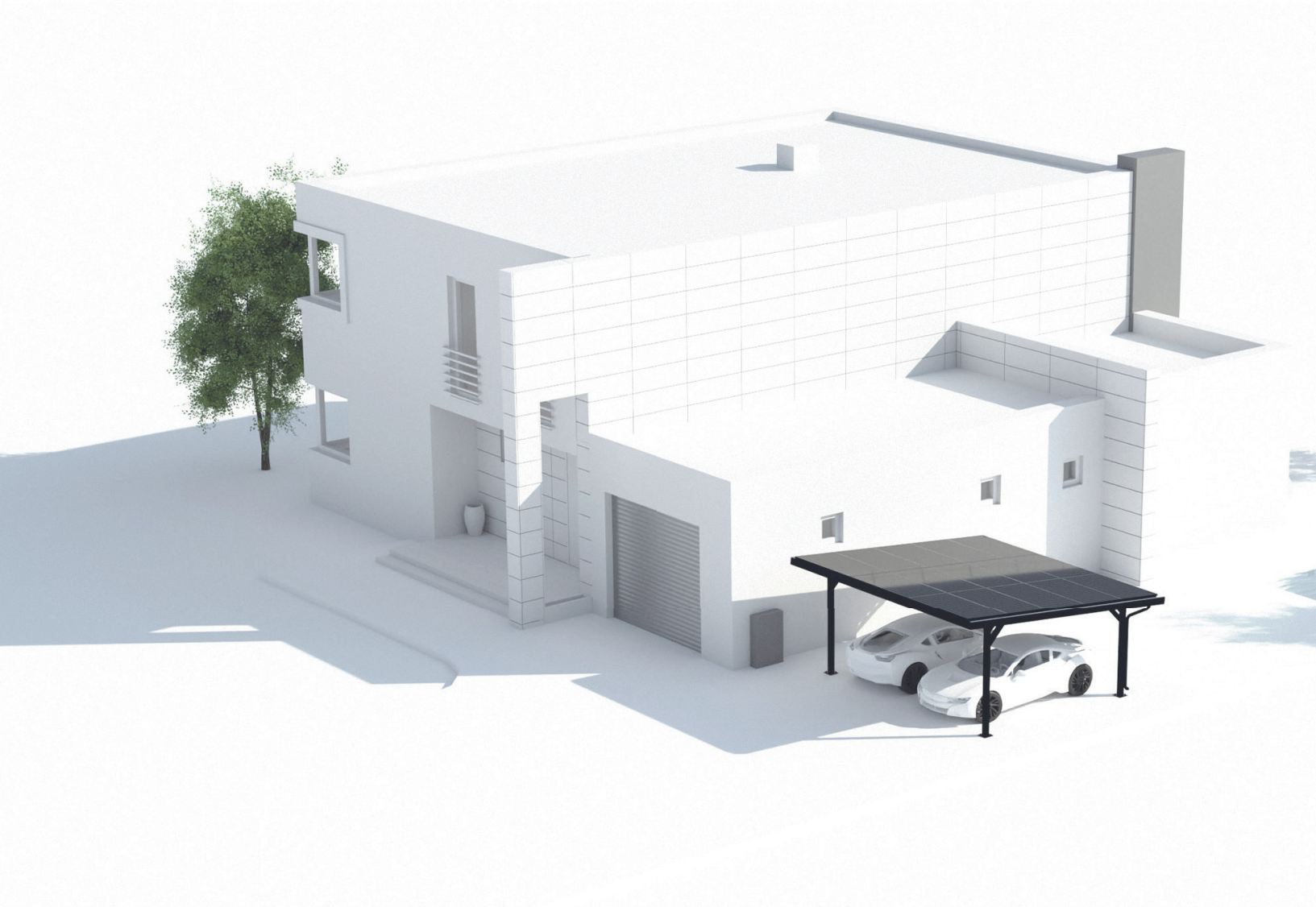
In combination with our trapezoidal mounting technology, the E-Port takes advantage of the minimally invasive and highly reliable BR 1/15 rail, which allows for convenient horizontal installation of solar modules. The E-Port is characterised by the use of a trapezoidal steel sheet with a drainage solution.

Intelligent design

Designed to use the electricity generated and meet the special requirements of the charging infrastructure. The battery and inverter systems can be integrated into the design. A trapezoidal steel sheet with a drainage solution ensures complete watertightness. The complete system is supplied in black, including the module clamps, which give the system a slim and elegant appearance.



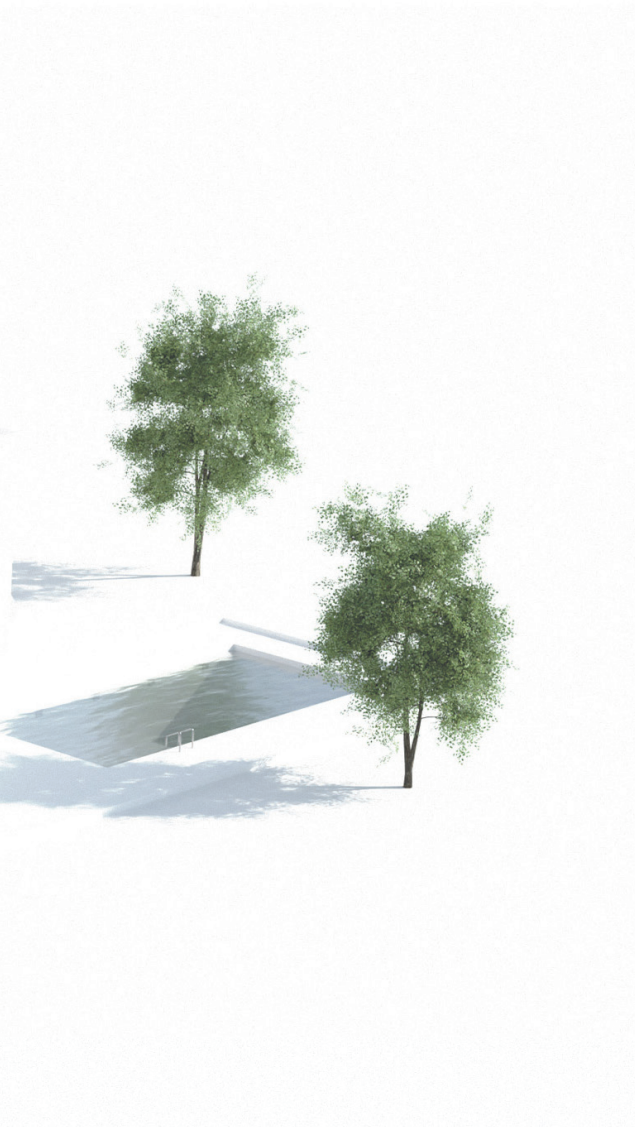
Solar Carport and Power Plant in One.



Design your own your own private energy transition.

The E-Port Home from Mounting Systems is a durable, flexible and highly efficient solar carport that will save you money for many years. The highest quality material and workmanship guarantee you many years of enjoyment and maximum yields. In addition, you receive a 10-year manufacturer's product guarantee.

The smart design enables a quick and easy assembly. Mounting Systems manufactures from its headquarters in Rangsdorf, Germany, durable and innovative products, which are state of the art and of highest functionality.



The complete solar carport is characterised by:

- Flexible for different module sizes
- Simple and quick installation
- Concrete fixation plate
- No building permit necessary (under special circumstances individual case examination)
- Powder-coated steel
- Eco-friendly product
- Roof drainage

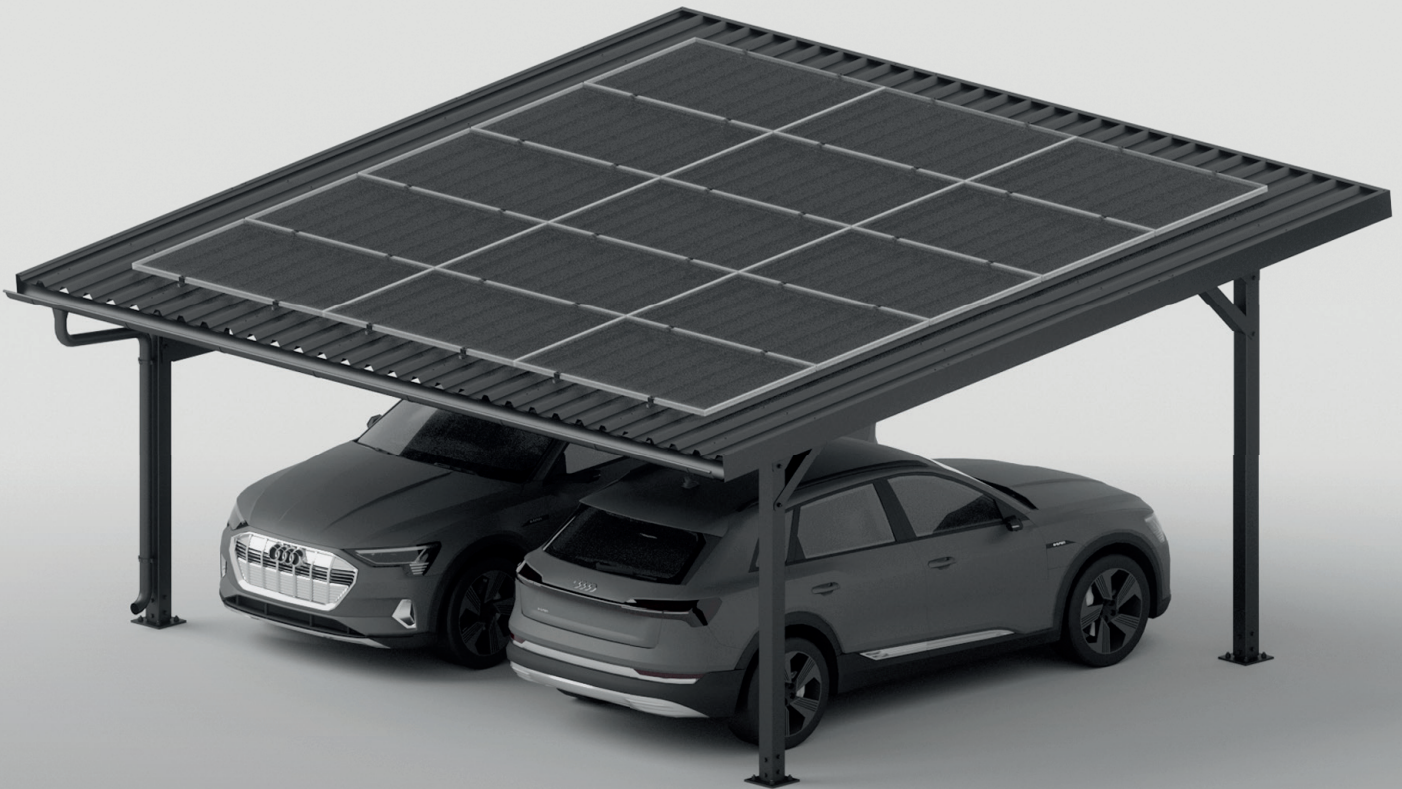
Your guarantor for sustainability

Above all, sustainability also means a long-term approach. That is precisely why Mounting Systems develops durable and recyclable products at affordable prices. Make the most of your own space and become more energy independent. This is not only a worthwhile economic decision, but also contributes to a healthy climate, a clean environment and an emission-free future.

Independent of rising electricity prices

Switch now to your self-generated solar power through your own power plant on the carport roof.

E-Port Home



Double

E-Port Home Double

This solar carport provides a parking space for two cars at once. The E-Port Home Double is equipped with 15 modules that provide up to 4500 watts, which is roughly equivalent to the annual consumption of a 4-person household.



Single

E-Port Home Single

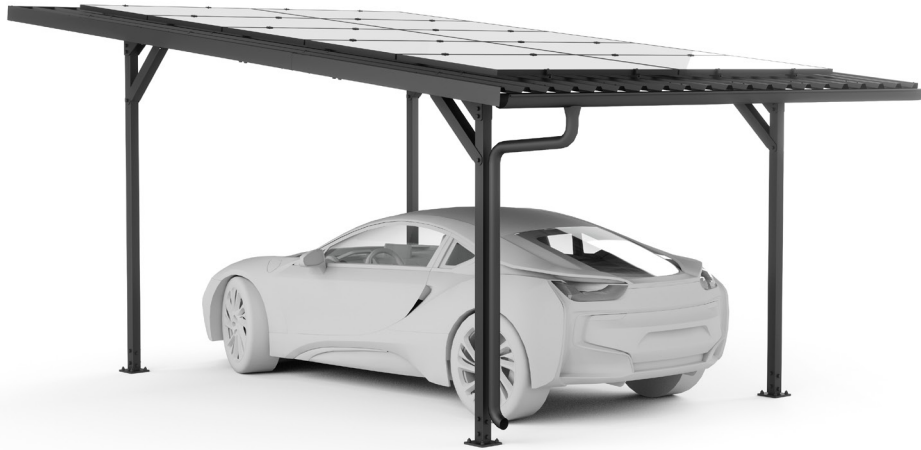
The perfect solar carport for private households with a parking space for one car. The 10 installed solar modules provide up to 3000 watts and can be used for charging the car as well as for self-consumption in the house. The E-Port Home is equipped with a rain gutter incl. downpipe and other essential features.

E-Port Home





E-Port Home Single

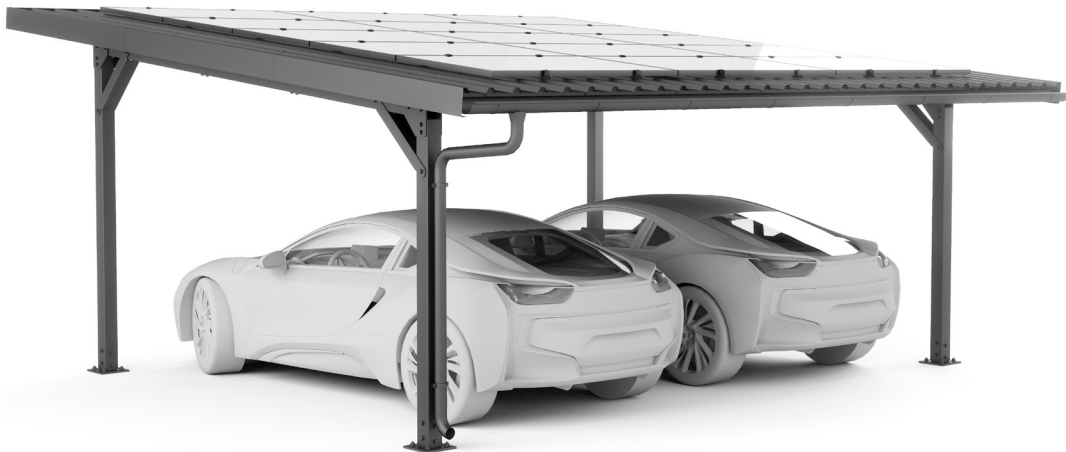


Dimensions

Parking space L x W x H: 4240 x 2920 x 2230 mm

Total space L x W x H: 6080 x 4235 x 2994 mm

E-Port Home Double



Dimensions

Parking space L x W x H: 4240 x 5380 x 2132 mm

Total space L x W x H: 6080 x 6345 x 2998 mm

Technical Specifications

Application

Open terrain

Included in the package

- Variable cable routing (cable duct can be fixed to any post with up to 3 clamps)
- Substructure for solar modules
- Continuous trapezoidal sheet with mesh (approx. 1.1 m x 6 m)
- Roof edging
- Drainage

Foundations

Concrete anchors

Simple assembly without special tools

Snow load

Max. 0.69 kN/m² – on the roof

Wind load

Max. 0.68 kN/m² – on the roof

Modules

Single:

Space for up to 10 modules (1.708 m x 1.134 m) with a module power of 405 Wp, total power 4.05 kWp

Double:

Space for up to 15 modules (1.708 m x 1.134 m) with a module power of 405 Wp, total power 6.075 kWp

Colour

Black

Requirement

No shadowing

Warranty

10 years



Open terrain



Trapezoidal sheet



Framed module



Orientation landscape

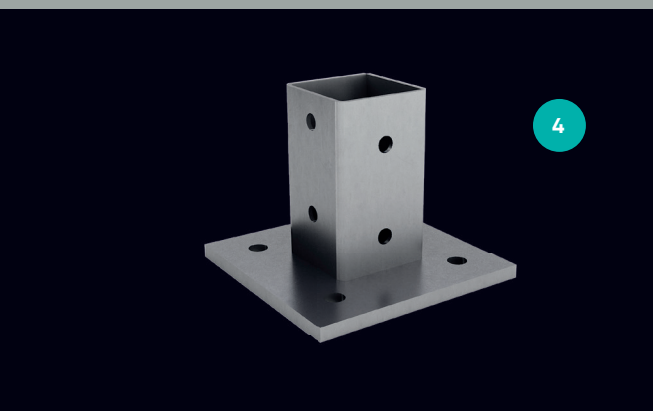
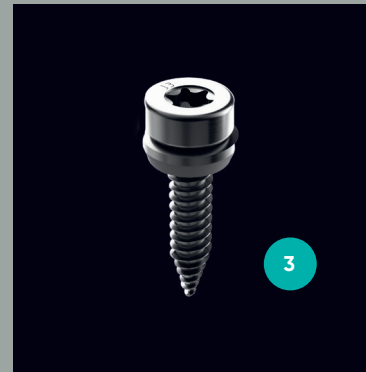


Orientation portrait

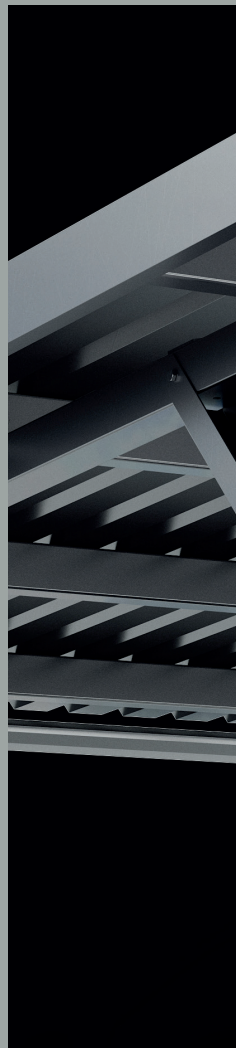


10
Years
Warranty

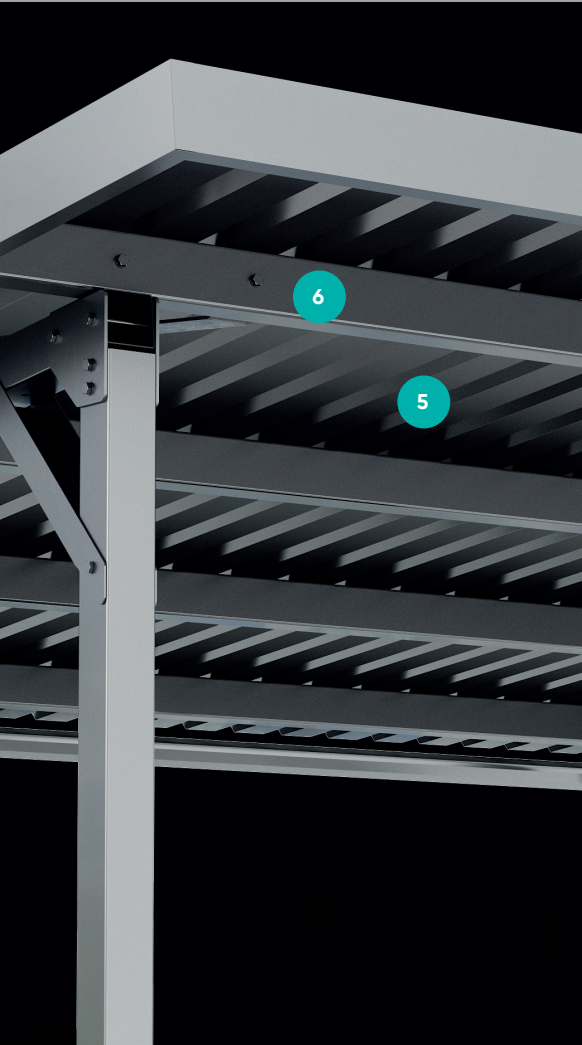
„Every component counts.
The combination of the highest
quality standards and the
implementation of sound
technical principles leads to a
product that pays for itself.“



- 1 Rail 1/15
- 2 Rail 5/40
- 3 Thin sheet screw
- 4 Foot
- 5 Front support
- 6 Supporting beam in steel
- 7 Module clamp
- 8 Module end clamp



more than a system.
it's a brand.



Office Rangsdorf
(Headquarters & production)

Mounting Systems GmbH
Mittenwalder Straße 9a
D-15834 Rangsdorf
www.mounting-systems.com

Tel: +49 3370 8529 - 100
Fax: +49 3370 8529 - 199
Mail: info-de@mounting-systems.com

Office Cologne
(Sales office)

Mounting Systems GmbH
Rolshover Straße 524
D-51105 Köln
www.mounting-systems.com

Tel: +49 221 29277 - 600
Fax: +49 22129277 - 629
Mail: info-de@mounting-systems.com