





# User Manual

EV CHARGING MODEL 2

- Read all instructions before using, operating, or maintaining.

# CONTENTS

01	Safety Precautions .....	1
02	Display .....	2
03	Status Indicator .....	2
04	Charging Steps .....	3
05	Circuit Board Sensor .....	3
06	12 Safety Protection .....	3
07	Timer Function .....	4
08	Warranty .....	5

## GENERAL INFORMATION

Zencar is a versatile portable electric car charger that ensures reliability, safety and convenience of use in various conditions.









The charger is powered from a standard CEE outlet. The charger is compatible with all cars that are fitted with the relevant charging socket. The charger has a built-in electrical protection, RFID card reader (2 cards are included in the set). The housing also has special, elongated holes that will attach the charger to the wall. The five-meter charging cable is made of light, flexible and durable material. You will find more information about the product specification in the separate section of this document.

The device's display allows to read various, detailed information and statuses such as time, charging power, the amount of energy supplied, status of charging, operating temperature and many other parameters. It also displays safety warnings. You will find more information about the display in the separate section of this document.









# SAFETY PRECAUTIONS

Thank you for purchasing and using ZENCAR EV Charging Model 2 cable. In order to help you properly use this product, please read this user's manual carefully before charging.

## Caution

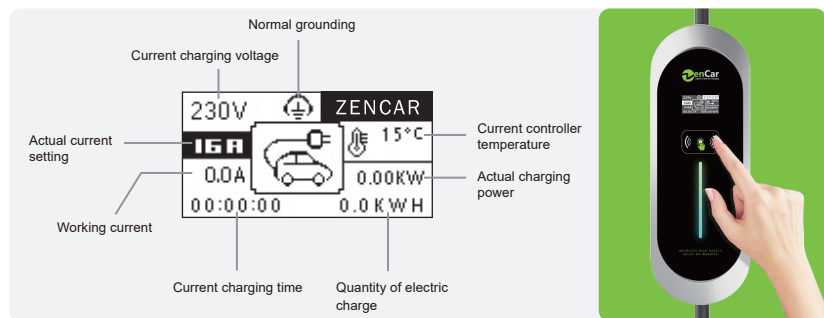
-  It's not recommended to use the device for charging while raining due to the safe use of electricity.
-  Do not submerge the control box in water.
-  Do not step on, pull, fold or knot the cable.
-  Do not drop the control box or place a heavy object on it.
-  Do not place the charging cable near high temperature object when charging.
-  Do not place the device in the car or in a sealed space when charging.
-  Do not operate the device in temperatures beyond its operating range of -25 °C to +50 °C.
-  Power-supply side input cable should be at least 3\*2.5mm<sup>2</sup> (recommended 3\*4mm<sup>2</sup>), with a standard 16A socket. It is suggested that the power distribution is done by the professionals.

## Warnings

-  Only for the limited using at the condition of there is RCD protection breaker in the power supply section.
-  Do not use this product if the EV charging cable is damaged.
-  Only for use with EV charging.
-  The product must be grounded.
-  Do not use this device with an extension cord or adapter.
-  Do not put fingers into the charging connector.
-  The device contains no users serviceable parts. Do not attempt to repair or service the device yourself.
-  If device fails to operate correctly in accordance with the operation manual, do not use this device. Contact dealer for repair or replacement.

## DISPLAY

The display in of the device allows you to read various detailed information, statuses and safety warnings.

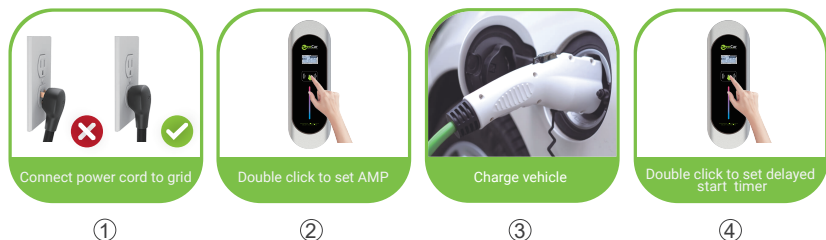


230V	Current charging voltage		Charging...(Dynamic picture guide)
16A	Actual current setting		When the vehicle-end is disconnected, please connect the vehicle (Dynamic picture guide)
0.0A	Working current		Charging failure
00:00:00	Current charging time		Normal grounding
0.00KW	Actual charging power		Abnormal grounding
0.0KWH	Quantity of electric charge	12	Error code
15°C	Current controller temperature		Delayed charging
	The charging device is connected to the vehicle and waiting for the vehicle to match		

## STATUS INDICATOR

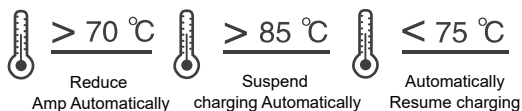
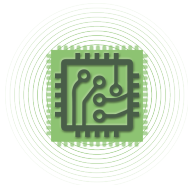
<b>Green</b> Ready	<b>Green flash</b> EV Connected	<b>Red flash</b> Connected Error	<b>Multicolour flash</b> Charging
<b>Blue</b> Schedule Charging	<b>Green flash</b> Charging Completed by the car	<b>Indicator off</b> Charging completed and charger disconnected	<b>Yellow flash</b> Charging Fault

## CHARGING STEPS



## CIRCUIT BOARD SENSOR

The charging power may be automatically reduced or charging suspended in case the internal temperature raises above the safety level. Please observe the display in order to obtain actual temperature readings:



## 12 SAFETY PROTECTION



## TIMER FUNCTION

Use the Delayed Start Timer to schedule your charging session. This allows you to benefit from off peak rates and saves your money. Double click the indicating position when the plug is connected to the car to schedule the charging session.



### Delayed Charging



Double Click	Timer Status
Without double clicking	No Timer; Charging starts immediately
1st double click	Start Charge session after 2 hours
2nd double click	Start Charge session after 4 hours
3rd double click	Start Charge session after 6 hours
4th double click	Turn off timer; Charging starts immediately



# WARRANTY



## Precautions before use

- Ensure charging connector, plug, cable and control box are free of any abnormalities such as scratches, rusts, cracks, etc.
- Please do not Charging if the socket or plug surface is damaged, rusted, broken or too loose; It should be replaced immediately if any abnormal founded. The socket must be replaced at least every 3 years.
- Wipe with a clean and dry cloth if the plug get dirty or wet.
- Ensure power plug and socket are consistent before charging.
- When the new energy pure electric/hybrid vehicle's battery is fully charged, the vehicle side cuts off the current automatically, the ZENCAR controller's green indicator light flickers.

ZENCAR Mode 2 Cable is warranted to be free of defects in material and workmanship for a period of one year from the date of shipment.

This warranty does not cover any damage due to the following cases:

1. Improper handling, installation, use and maintenance by users.
2. The break down and the failure caused by the force majeure, such as direct damage and inability to function properly caused by natural disasters.
3. Products are filled with water or soaked in water.

This warranty does not include the cost of returning to the factory for repair.

This warranty is only valid to the original purchaser of the device and is not transferable.